



pCon
PLANNER

New features in pCon.planner 8.8.1

Sales Features pCon.planner 8.8.1 (2023-05-02)

New Features in pCon.planner

Content

1	Properties Editor: Improved Handling and Greater Clarity	3
1.1	One View Mode for all Purposes	3
1.2	Tab Concept Provides More Structure	3
1.3	New Article Tab	4
2	Changes for Commercial Articles	5
3	Import	6
3.1	IFC Import	6
3.2	PDF Import.....	6
3.3	Point Clouds.....	6
4	Export.....	7
4.1	FBX.....	7
4.2	Enhanced Export Dialog with Layer Filter for many File Formats.....	7
4.3	USDZ	7
4.4	PEC.....	7
4.5	Excel.....	7
5	Additional Improvements	8
5.1	Layout Area.....	8
5.2	Directly Visible Effect of Color Changes.....	8
5.3	OSPRay.....	9
5.4	New Design for Share Dialog	9
5.5	Articles: 2D and 3D Display available in all Editions	9

All changes and improvements in this document refer to all editions of pCon.planner.

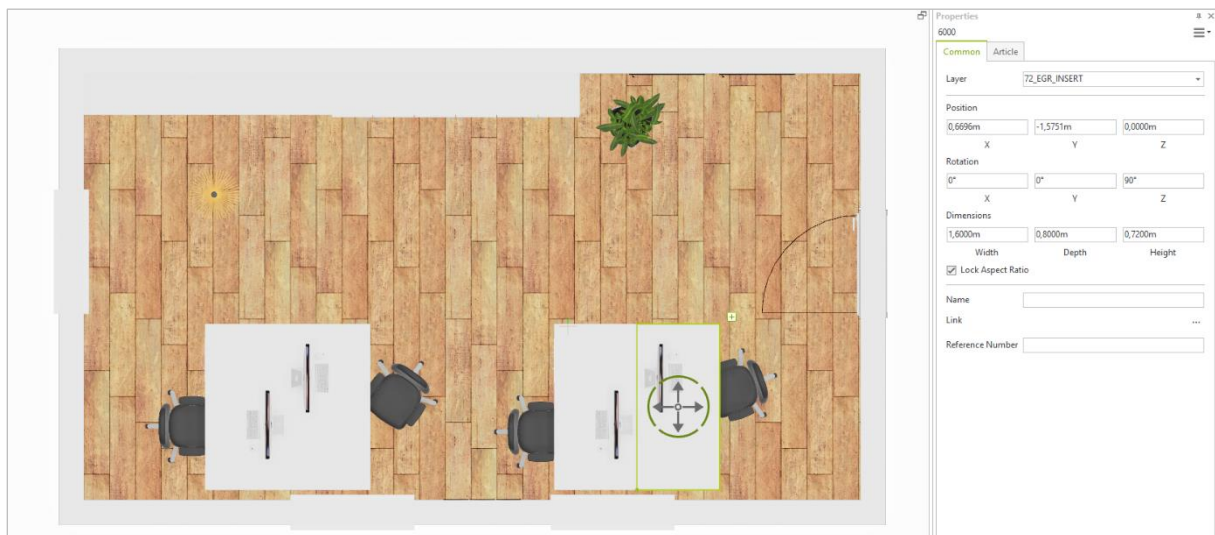
1 Properties Editor: Improved Handling and Greater Clarity

1.1 One View Mode for all Purposes

The reworked user interface of the *Properties Editor* provides you with even greater clarity and more overview. The properties of all elements are arranged in a neat and clear way, helping you with all of your modification and configuration tasks.

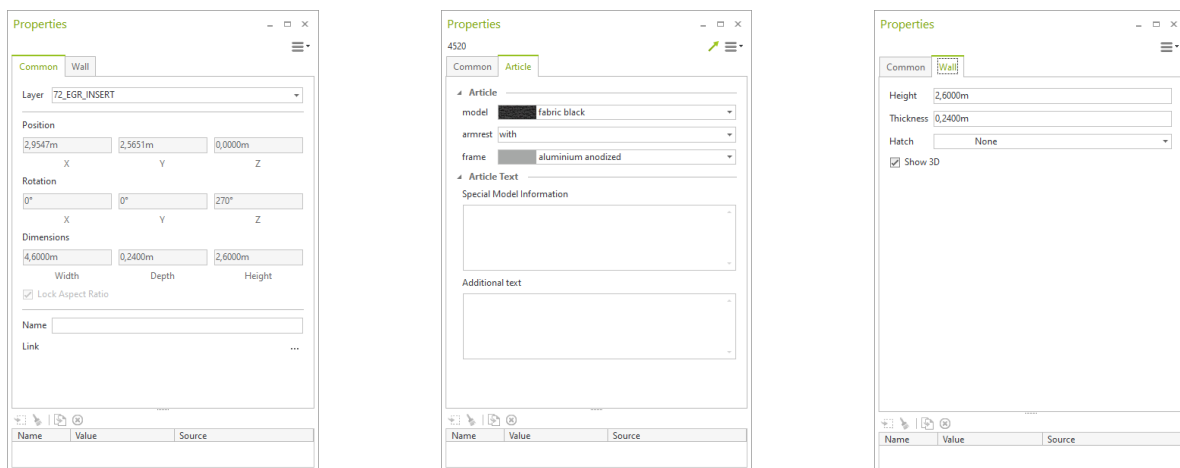
In addition, we limited the *Properties Editor* to one work mode, meaning that there is no need to switch between the modes for different tasks anymore; multi selection of properties is again directly possible from the *Properties Editor*, in the *Properties Container*, the *Profile Manager* as well as for Drag&Drop.

If you insert a new article, its properties are directly displayed and accessible with pCon.planner 8.8.1.



1.2 Tab Concept Provides More Structure

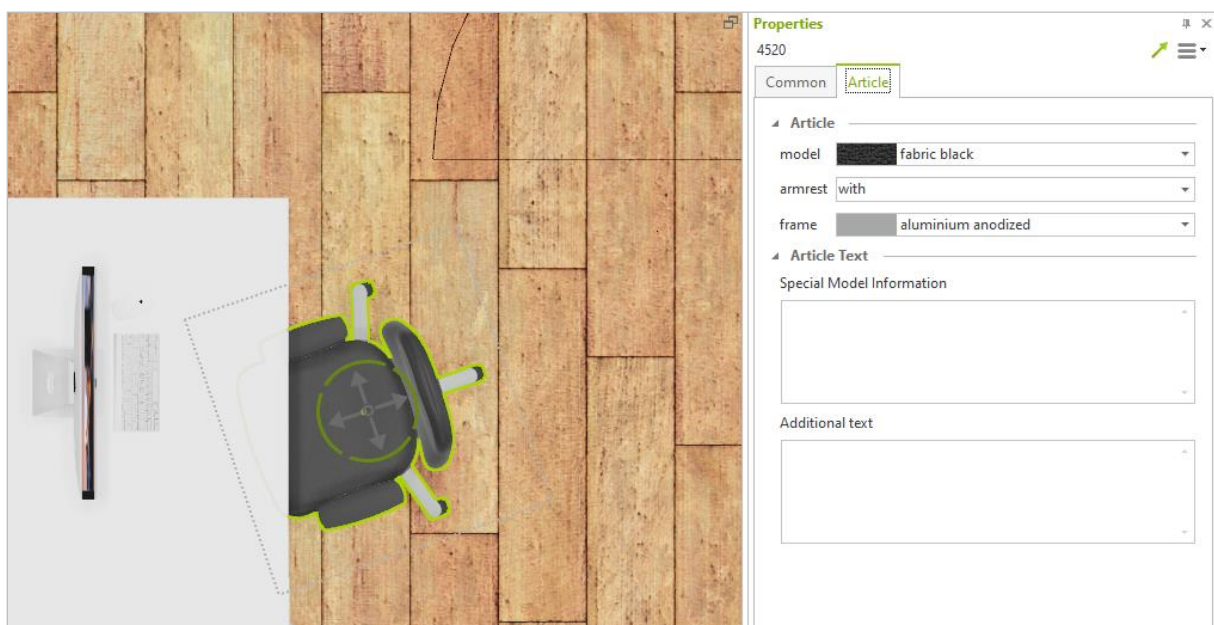
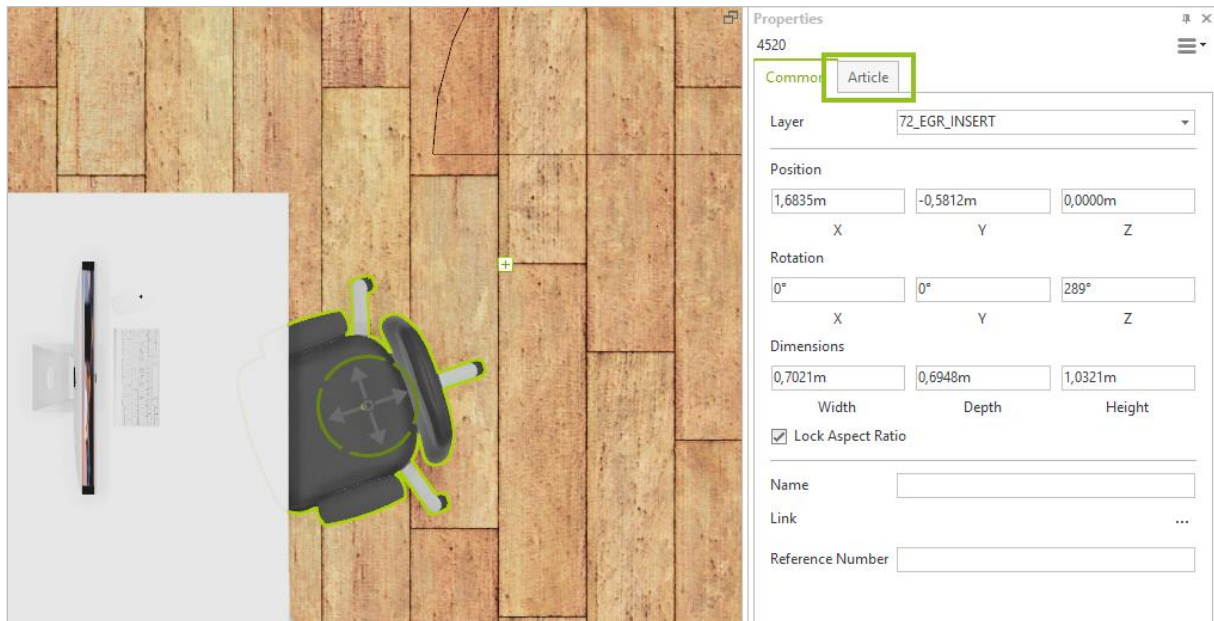
The tab concept is now even more consistent: Every element that has distinct properties will be opened in its own tab upon selection. Plugins installed with pCon.planner will get their own tabs, as well.



1.3 New Article Tab

With pCon.planner 8.8.1, we reworked the *Article* tab to give you the following benefits:

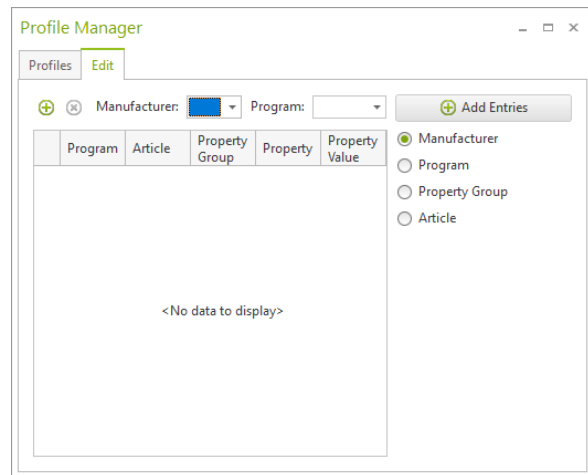
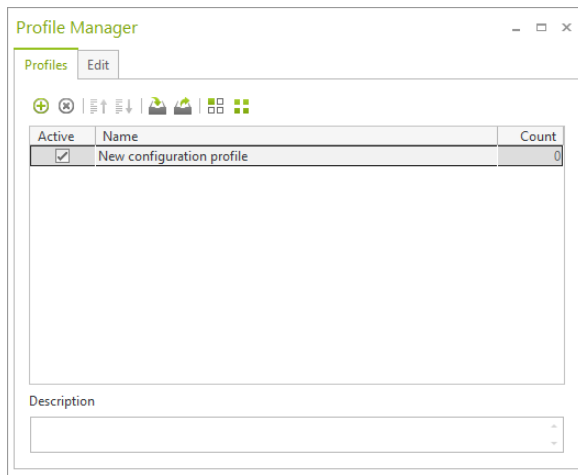
- The *Article* tab is also displayed if an article is selected but not yet opened for configuration.
- As an alternative to double-clicking an article in order to open it, your selected article will also be opened for configuration if you switch to the *Article* tab of the *Properties Editor*.
- The information on the article currently selected is now displayed in the *Properties Editor* in a clearer manner.



2 Changes for Commercial Articles

For commercial articles, the following changes were implemented in addition to the improvements in the *Article* tab:

- Articles opened for configuration will stay opened while being rotated or moved.
- OAP uses the new *Properties Editor* design.
- If article update or export to article list is not successful, the respective articles are automatically selected in the drawing.
- The *Profile Manager* comes with a new design and newly structured to improve its usability.



3 Import

3.1 IFC Import

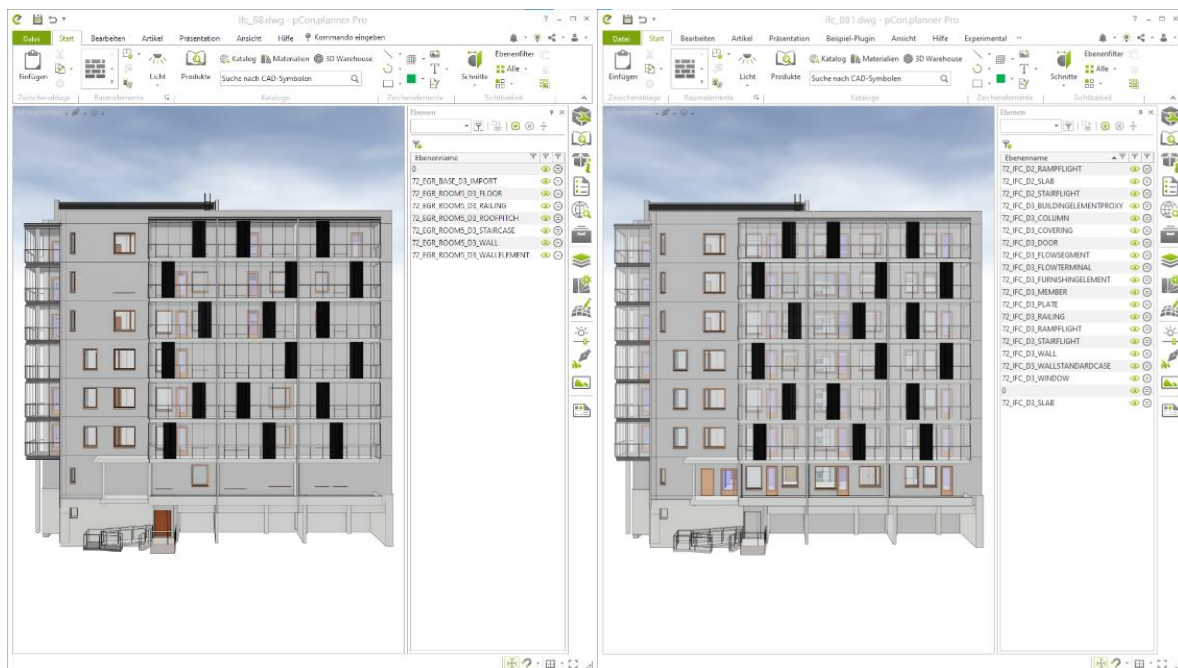
We have interwoven pCon.planner 8.8.1 even more closely with the world of BIM. For this purpose, the IFC import has been completely revised to work more quickly, efficiently and robust.

What's best about the reworked IFC import: The variety of the imported information becomes greater with pCon.planner 8.8.1. We now import more layer information – compare in images below.

The improved IFC import needs much less RAM and results in smaller pCon.planner drawings. See file size of the example file from the images below.

File imported with pCon.planner 8.8

File imported with pCon.planner 8.8.1



37.249.989 Bytes

4.207.068 Bytes

3.2 PDF Import

The *Stack Elements* option (hamburger menu, bottom left corner of the *PDF* import dialog) is used to either maintain the stacking of objects in the imported *PDF* or set them to zero level. Open the hamburger menu and remove the check mark in front of *Stack Elements* to import all elements within the *PDF* onto zero level.

3.3 Point Clouds

The E57 import for point clouds supports a greater variety of variants of the point cloud format. The enhancement includes the import of iPhone generated E57 files.

4 Export

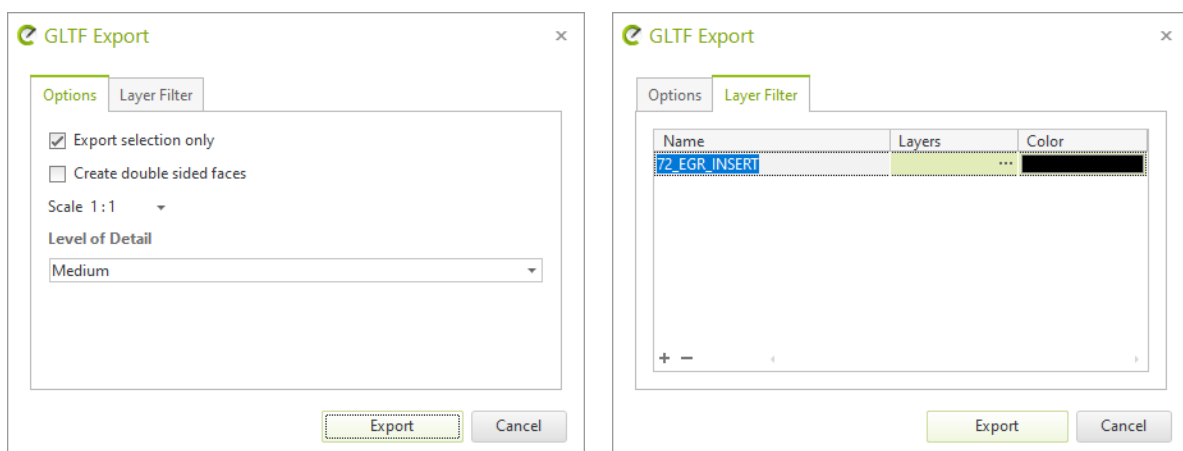
4.1 FBX

The export of FBX files now supports normal maps.

4.2 Enhanced Export Dialog with Layer Filter for many File Formats

Starting with version 8.8.1, many export formats of pCon.planner use the enhanced export dialog, providing a layer filter to preselect layers for export (*Layer Filter* tab). Via this layer filter, a set of layers can be exported to a new target layer. If required, a color for the target layer can be specified.

The layer filter is available for the following export formats: GLB, USDZ, FBX as well as Collada.



4.3 USDZ

The USDZ export now does support n-gons as a sub-type of surface meshes.

4.4 PEC

When exporting PEC files, user articles with sub-articles are now supported. In addition, the export of materials now includes roughness and metallic maps.

The handling of defective articles has also been improved.

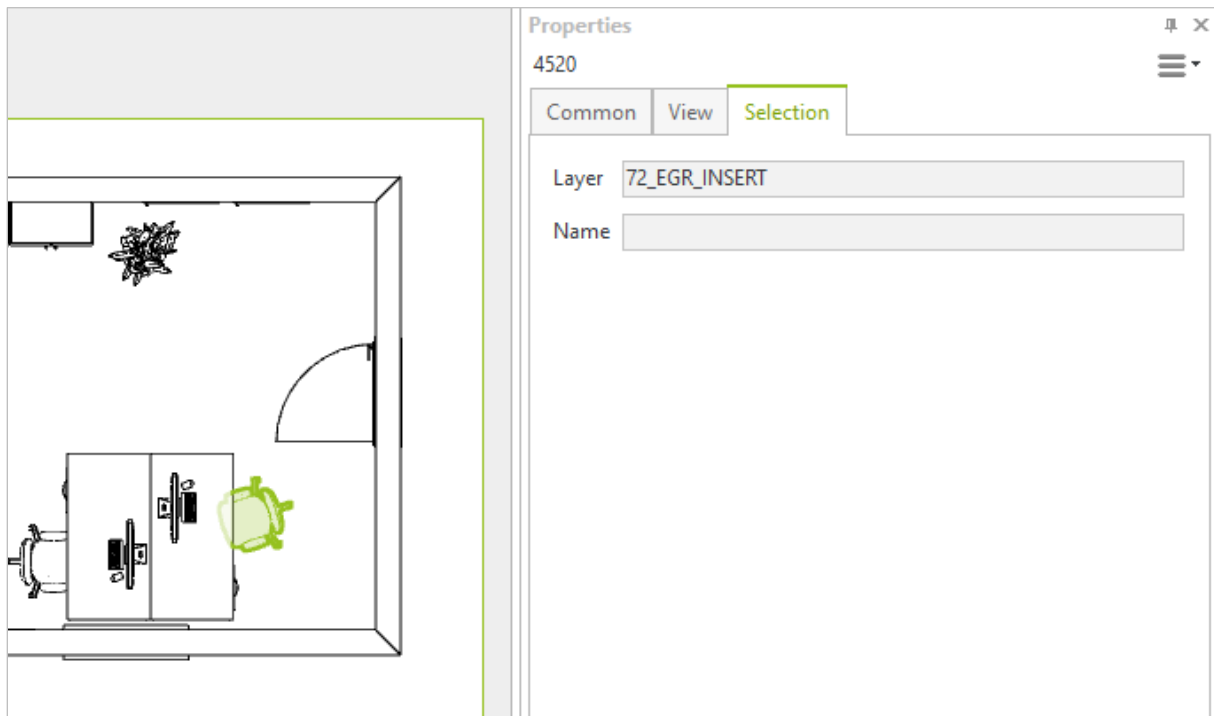
4.5 Excel

The *Article List* page of your exported Excel files does now include the new column *Reference Number*.

5 Additional Improvements

5.1 Layout Area

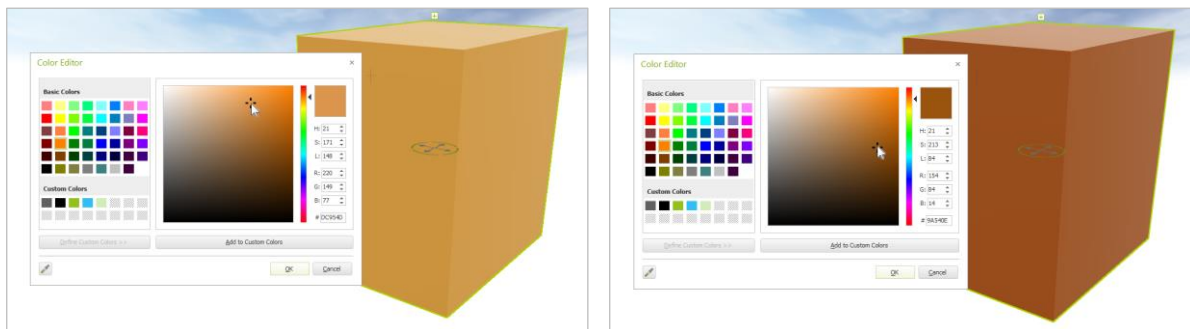
The new tab concept of the *Properties Editor* is also used in the *Layout* area. The *Selection* tab is a unique feature of the *Properties Editor* in the *Layout*: It contains *Layer* and *Name* for selected objects within the *Layout* viewports. These objects are read-only in the *Layout* area.



5.2 Directly Visible Effect of Color Changes

Selecting a new color for an object in your drawing via a color selection dialog (like *Standard Colors* drop-down menu, *Color Editor* or *Color Picker*) will have an instantaneous effect on your object. This does also apply for dynamic changes of the color in the dialog at hand.

This new effect is also valid when adjusting the background color of your drawing or when working with *Render Styles*.



5.3 OSPRay

With pCon.planner 8.8.1, OSPRay delivers better performance when using CPUs with hybrid cores (12th generation Intel processors and newer).



5.4 New Design for Share Dialog

The Share AR and Share 3D export dialog have been modified to use a clearer layout.

5.5 Articles: 2D and 3D Display available in all Editions

The options to show the commercial articles within your drawing either in 2D or in 3D display (or alternatively use both) are now implemented in all editions of pCon.planner. The respective settings are found on the Articles tab. They are also included in the Product catalog.

Legal remarks

© EasternGraphics GmbH | Albert-Einstein-Straße 1 | 98693 Ilmenau | GERMANY

This work (whether as text, file, book or in other form) is copyright. All rights are reserved by EasternGraphics GmbH. Translation, reproduction or distribution of the whole or parts thereof is permitted only with the prior agreement in writing of EasternGraphics GmbH.

EasternGraphics GmbH accepts no liability for the completeness, freedom from errors, topicality or continuity of this work or for its suitability to the intended purposes of the user. All liability except in the case of malicious intent, gross negligence or harm to life and limb is excluded.

All names or descriptions contained in this work may be the trademarks of the relevant copyright owner and as such legally protected. The fact that such trademarks appear in this work entitles no-one to assume that they are for the free use of all and sundry.