



pCon
PLANNER

New features in pCon.planner 8.7

Sales Features pCon.planner 8.7 (2022-03-28)

New Features in pCon.planner

Content

1	Clipping (all Editions).....	3
1.1	Three Clipping Modes.....	4
1.2	How it Works	8
1.3	Share Clipped Views	9
2	Clippings in the Layout Area (pCon.planner PRO).....	9
3	Improved License Control (pCon.planner PRO)	9
4	Product Information (all Editions).....	10
5	Import/Export	10
5.1	Improvements for many File Formats	10
5.2	OBX and OBK Import (PRO and ME)	10
6	Additional Changes	10
6.1	More Clarity: Reduced Number of Render Modes (all Editions)	10
6.2	Export of Logos for Batch Rendering Service (pCon.planner PRO).....	10
6.3	Support for Windows 11.....	11
6.4	Highlighting of Active Viewport in Planning Area (all Editions).....	11
6.5	User Defined Proxy Server (all Editions).....	11
6.6	New Setting for Internal Browser (all Editions)	11

1 Clipping (all Editions)

The *Clipping* menu enhances pCon.planner visibility control: clippings set the visual focus to a section of a complex drawing or provide insights into a chosen level of the planning – independent of object boundaries.

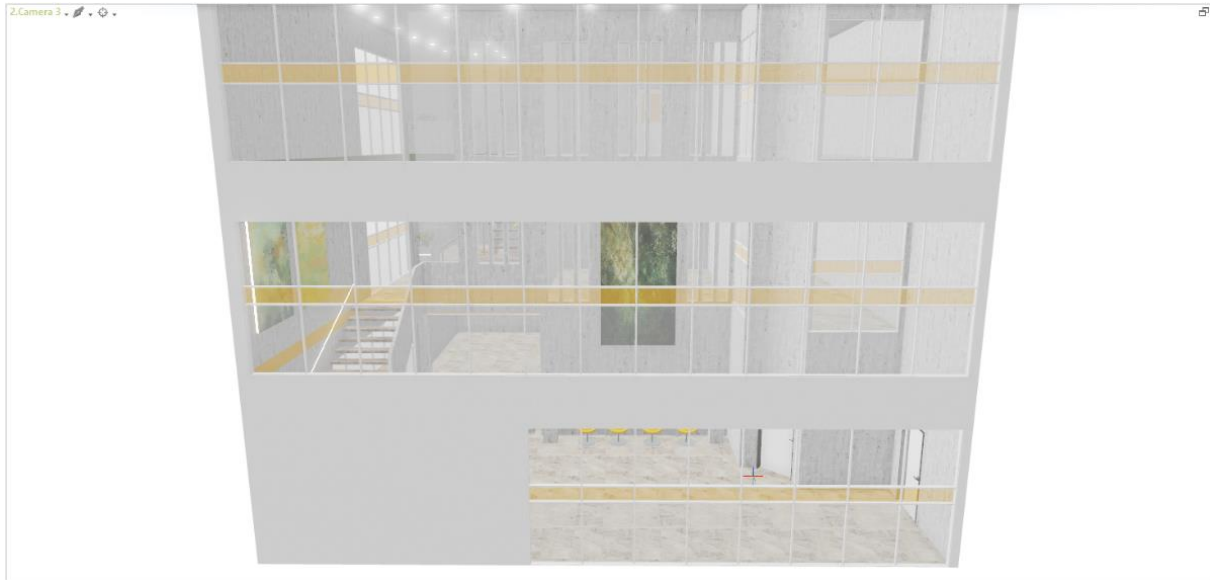
Clipping defines boundaries of visibility. All parts of objects, articles and architectural elements that are located in front of the *Clipping* planes are hidden. The results are visible in the planning area, in the layout and in various image media.

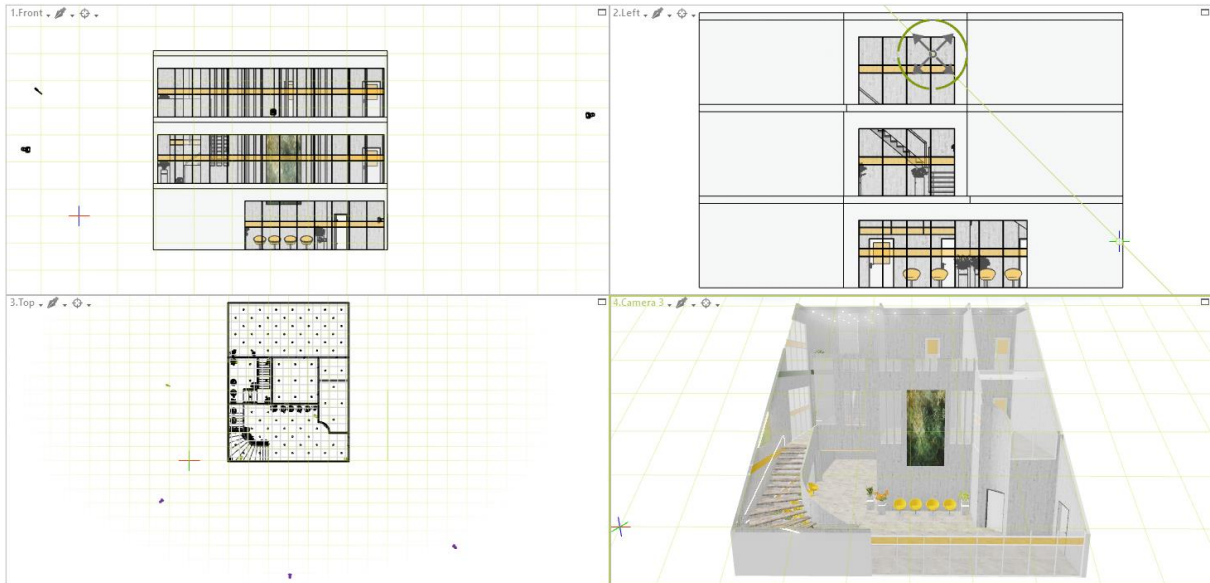


1.1 Three Clipping Modes

Three different modes are available:

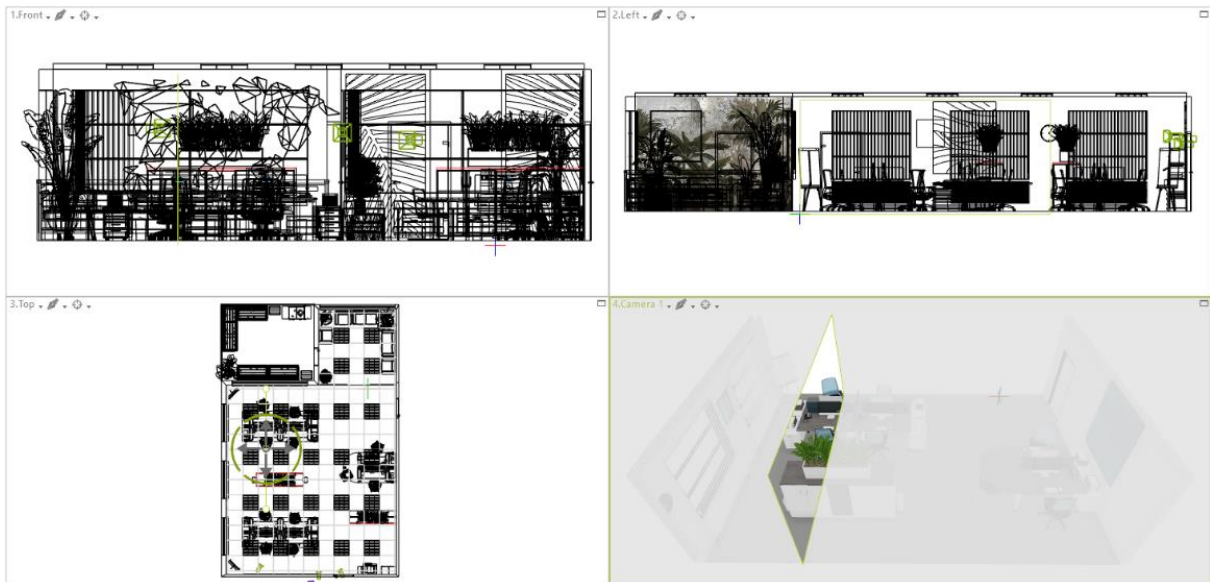
- *Plane*: the complete drawing is clipped along a selected plane; all parts of the drawing on one of the sides of this plane stay visible.





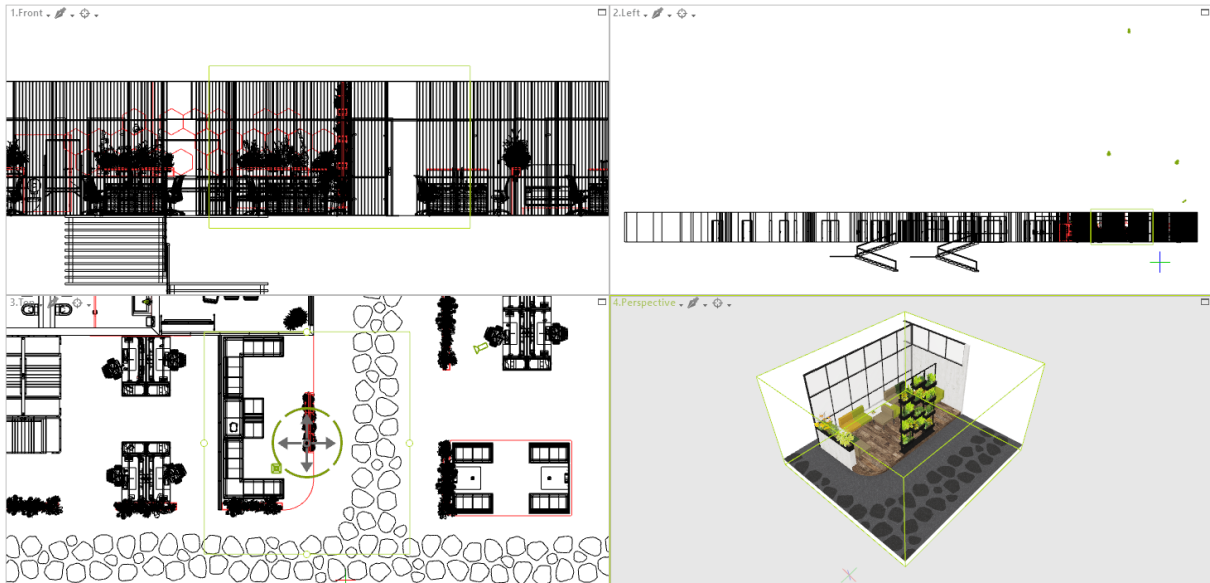
- **Region:** all the parts of the drawing that are located within an individually defined frame stay viewable while all objects outside this region are clipped.





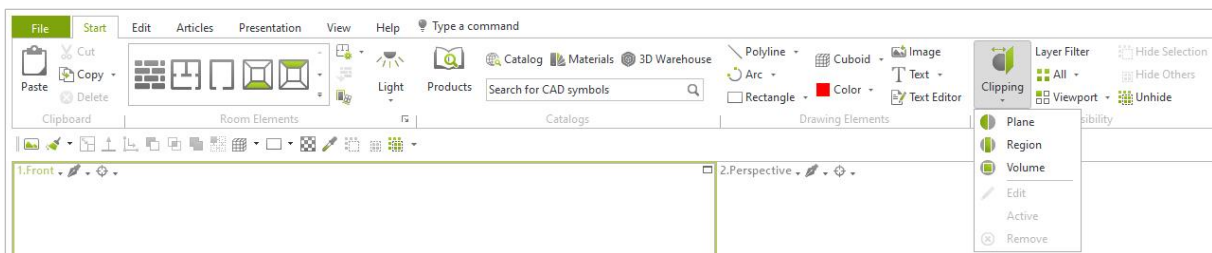
- *Volume*: limits visible area from six sides; here, all object parts that lie outside the volume are cut off.





1.2 How it Works

The *Clipping* tools are located in the *Visibility* group on the *Start* tab.



In the planning area, a separate *Clipping* can be defined for each viewport, if required. Use *Edit* in the *Clipping* menu to change the clipping plane in your active viewport.

Features in the *Clipping* menu

Edit	Edit the <i>Clipping</i> in your active viewport.
Active	Display or hide the <i>Clipping</i> in the active viewport.
Remove	Delete the <i>Clipping</i> from the active viewport.

Clippings are displayed in most of our standard *Render Modes*: *Wire Frame*, *Hidden Line*, *Colored*, *Textured* as well as *Realistic*.

They are not available when in *Shaded* mode.

1.3 Share Clipped Views

Clipped scenes are either viewed directly in pCon.planner or shared via a wide range of image exports. They are visible in the following image types:

- Photorealistic images and panoramas
- Images and panoramas rendered with OpenGL
- Vector images
- PDF exports from the *Layout* area

2 Clippings in the Layout Area (pCon.planner PRO)

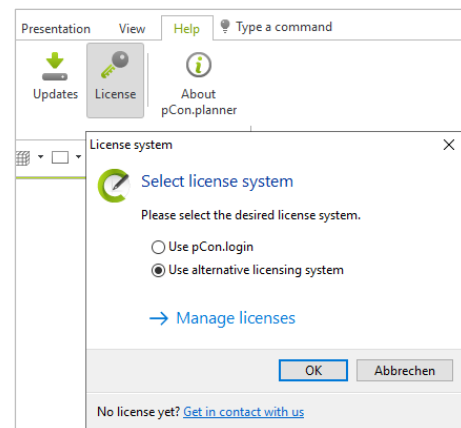
The new *Clipping* tools for hiding parts of your drawings can be integrated in your layouts in two ways:


1. We recommend to use clipped views from the planning area in the viewports on your pages by *Assign visibility* (context menu, opened with right click on an active viewport in the *Layout* area).
2. Alternatively, define a *Clipping* for the contents of a viewport directly in the *Layout* area (Select viewport > *Clipping* menu).

3 Improved License Control (pCon.planner PRO)

A new dialog facilitates the selection of your licensing system - for example, the change from traditional licensing to pCon.login: by clicking the *License* button on the *Help* tab, the *License system* dialog appears.

Via this dialog, the enhanced settings for the traditional licensing system can also be opened (*Manage licenses*).



If you are a user of the alternative licensing system (conventional licensing system) and log onto pCon.login in addition (via  in the top right corner of the ribbon), the pCon.planner will NOT receive a license via pCon.login.

Logging in does, however, grant you access to additional content in the *Product Information* window as well as to licenses for your pCon.planner plugins.

4 Product Information (all Editions)

Information on your products neatly arranged: The *Product Information* window now also allows the integration of tables

Depending on the data provided by the respective manufacturer, information on measures and currency are displayed in the units set in pCon.planner.

5 Import/Export

5.1 Improvements for many File Formats

Export:

- New technical base for USDZ as well as GLTF export
- Localization in Excel export improved (PRO and ME)
- OBX (pCon.planner PRO and ME) and OBK (pCon.planner PRO) retain original weight and volume from OFML data

Import:

- Improved import libraries for many geometry formats
- Import via drag and drop from Browser improved (distinction of URL and file)
- GLB import supports special mapping type

5.2 OBX and OBK Import (PRO and ME)

Starting with pCon.planner 8.7, OBX and OBK import become available in the ME edition (formerly restricted to pCon.planner PRO).

6 Additional Changes

6.1 More Clarity: Reduced Number of Render Modes (all Editions)

The new pCon.planner comes with six standard *Render Modes*. The outdated *Concept* mode is dropped.

6.2 Export of Logos for Batch Rendering Service (pCon.planner PRO)

Logos that are inserted and activated with *Show Logo* in the *Image* dialog are now displayed in images rendered with the Batch Rendering Service.

6.3 Support for Windows 11

pCon.planner 8.7 supports Microsoft Windows 11.

6.4 Highlighting of Active Viewport in Planning Area (all Editions)

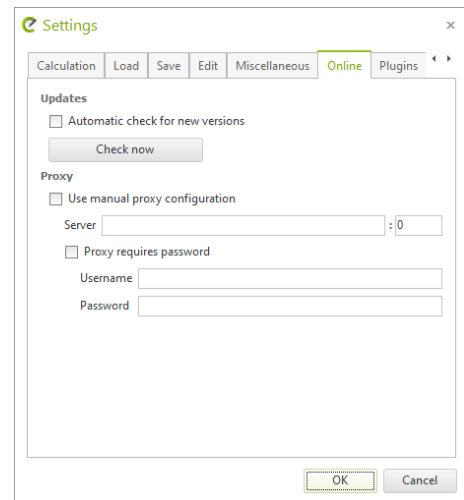
The active viewport is now highlighted by a green border.



The configurable horizontal/vertical division now divides the workspace into two viewports of equal size, in a 50/50 ratio.

6.5 User Defined Proxy Server (all Editions)

Starting with pCon.planner 8.7, you can use the new *Online* tab in the program settings to specify a proxy server if required.



6.6 New Setting for Internal Browser (all Editions)

The settings for the internal browser (accessible for example by clicking the *Catalog* button on the *Start* tab) are now including a function for deleting cookies.

Legal remarks

© EasternGraphics GmbH | Albert-Einstein-Straße 1 | 98693 Ilmenau | GERMANY

This work (whether as text, file, book or in other form) is copyright. All rights are reserved by EasternGraphics GmbH. Translation, reproduction or distribution of the whole or parts thereof is permitted only with the prior agreement in writing of EasternGraphics GmbH.

EasternGraphics GmbH accepts no liability for the completeness, freedom from errors, topicality or continuity of this work or for its suitability to the intended purposes of the user. All liability except in the case of malicious intent, gross negligence or harm to life and limb is excluded.

All names or descriptions contained in this work may be the trademarks of the relevant copyright owner and as such legally protected. The fact that such trademarks appear in this work entitles no-one to assume that they are for the free use of all and sundry.