



**pCon**  
PLANNER

New features in pCon.planner 8.6

# Sales Features pCon.planner 8.6 (2021-11-08)

## New Features in pCon.planner

### Content

1	Sharing Media Content .....	3
1.1	Sharing AR Files via Impress .....	3
1.2	Share Button: Improved Workflow.....	3
2	New Features for Properties Editor .....	4
3	Rendering.....	5
3.1	Changes in Image Calculation .....	5
3.2	Real-Time Rendering .....	6
4	Tools: 2D Projection (pCon.planner PRO) .....	7
5	Product Information.....	7
6	Integration of 3D Warehouse .....	7
7	Layout Area: Integration of Links (pCon.planner PRO) .....	8
8	Import and Export Formats.....	8
8.1	Import Formats.....	8
8.2	Export Formats .....	8
9	Further Improvements.....	9
9.1	Catalog Settings (pCon.planner PRO) .....	9
9.2	Advanced Support for pCon.login (pCon.planner PRO/ME) .....	9
9.3	Animations: Loop Function.....	9

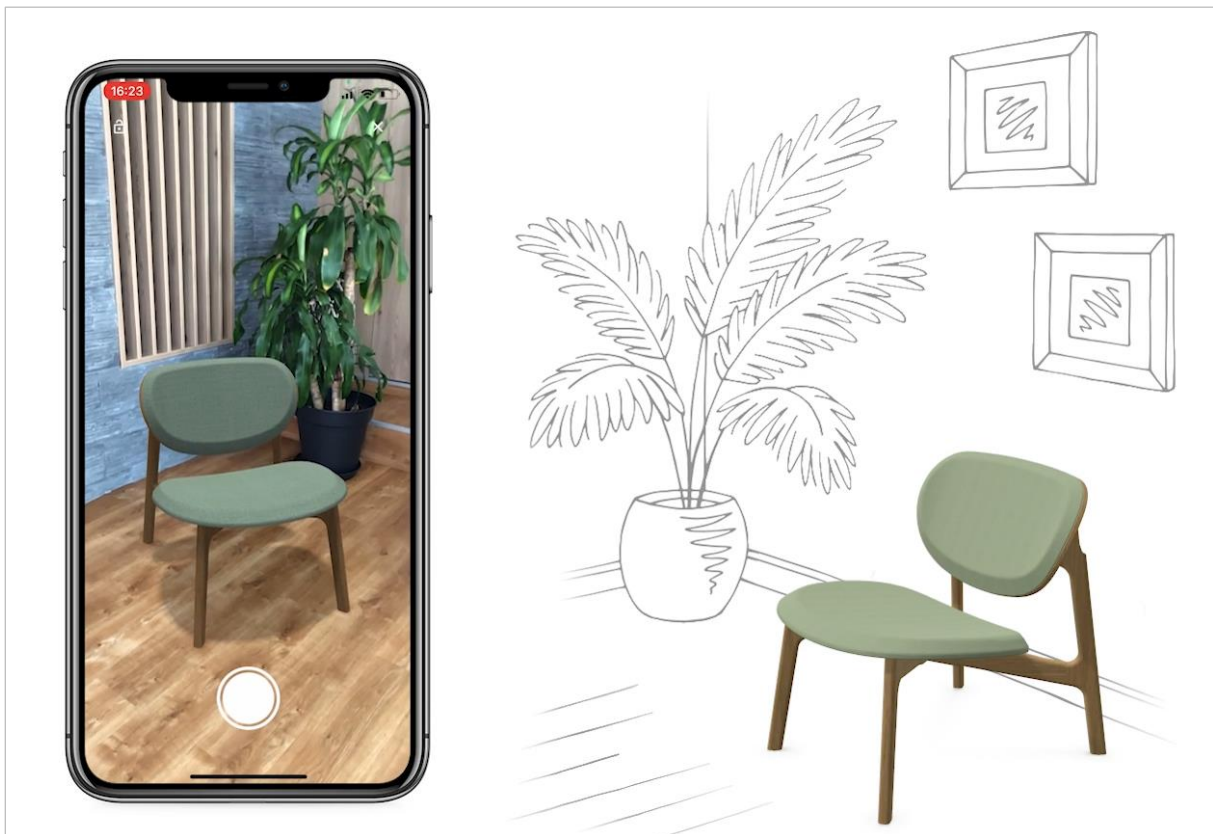
## 1 Sharing Media Content

### 1.1 Sharing AR Files via Impress

From now on, you use AR content created in pCon.planner with our presentation service Impress. AR or Augmented Reality stands for the enrichment of your real surroundings with virtual elements via your smartphone camera.

Simply select furniture in your drawing and click the *Share AR* button in the *Presentation* tab to create an AR file in IAR format. The best part about this: the file can be used on AR able Android as well as iOS devices.

The IAR file is shared using a QR code or a shared link via Impress. Share your content directly from pCon.planner – without the need to use an external browser.



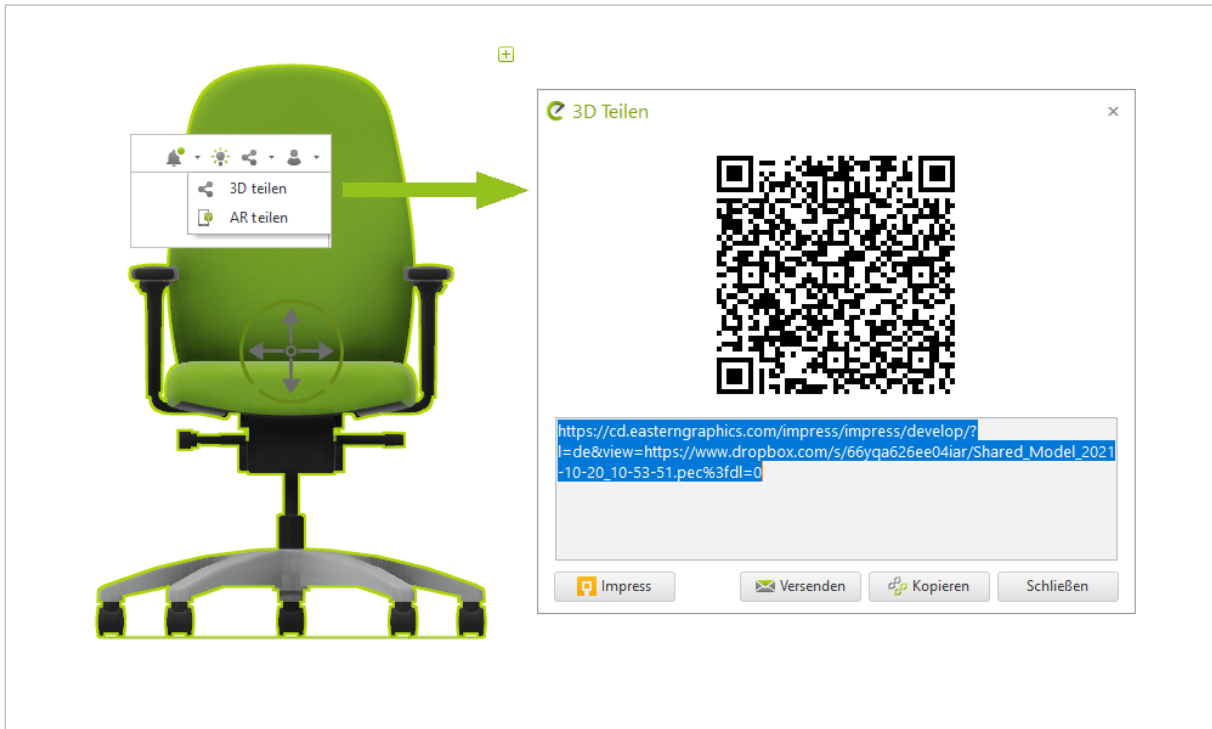
Manufacturer: Zeitraum

### 1.2 Share Button: Improved Workflow

The *Share* button on the right side of the ribbon now makes sharing your content even easier. Use the dropdown menu to choose whether you want to share

- 3D models or
- AR content.

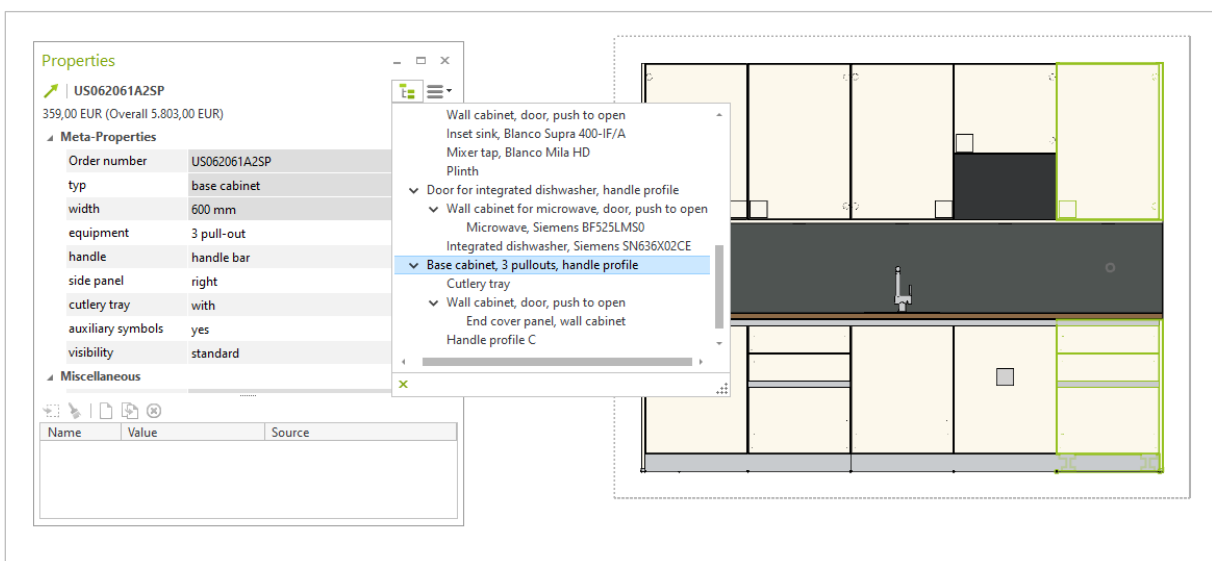
For both variants, a QR code and a shareable link are generated that you can share or use for presentation purposes. Here, too, you share the link or QR code conveniently directly from pCon.planner.



## 2 New Features for Properties Editor

New functions have been added to the *Properties Editor*: Use the *View* item (hamburger menu) to specify which pieces of article information are displayed. For example, it is possible to show or hide the description in the name of the article (*Show Article Text*).

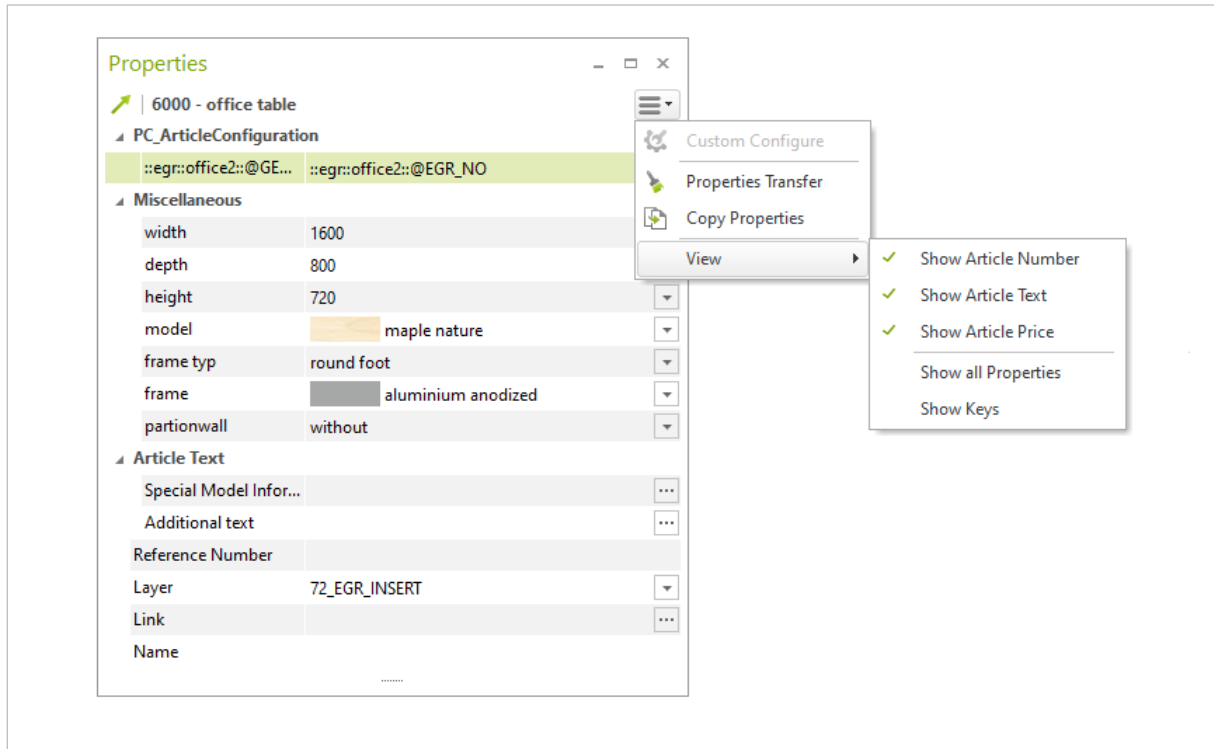
For complex articles, you can display an article tree in the *Properties Editor* that contains all components.



Manufacturer: Assmann

When selecting a child article or a component, the total price of the complex configuration and compound articles is always displayed in addition. Prices with a value of zero are hidden.

The new hamburger menu grants easy access to features formerly hidden in the context menu.



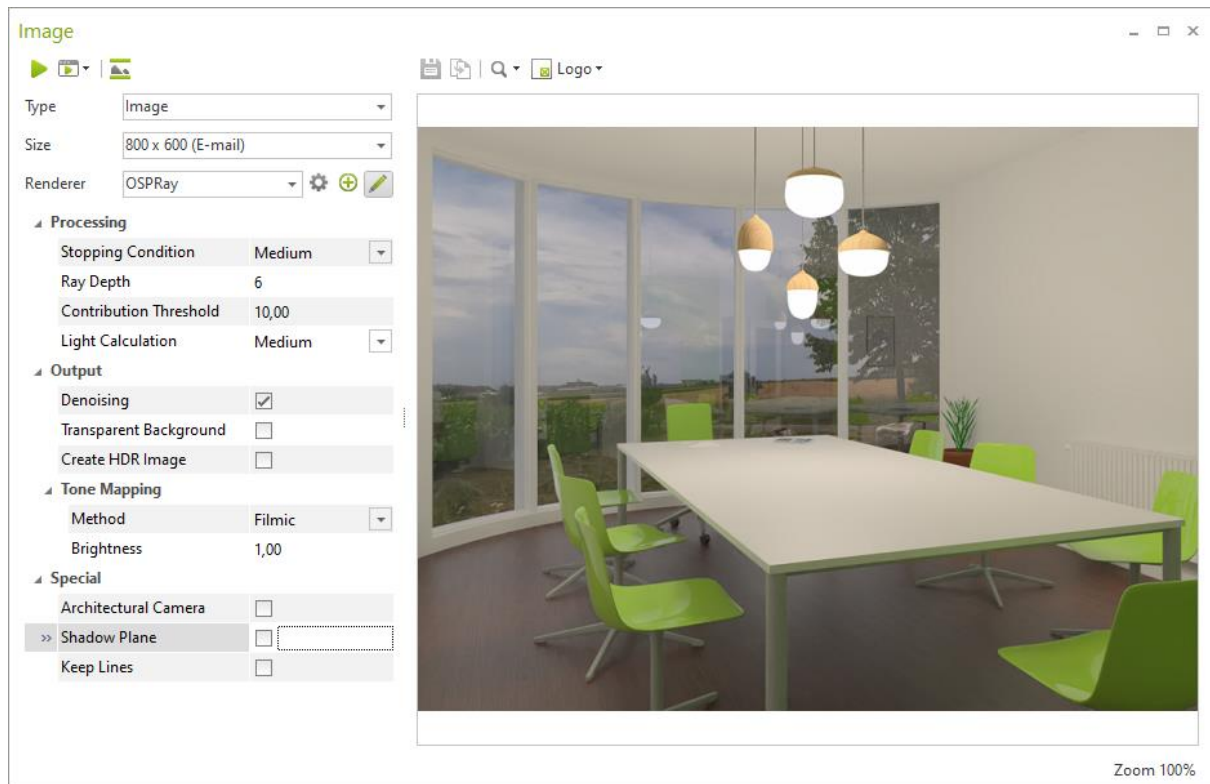
The design of the *Properties Editor* has been updated and simplified, as well.

## 3 Rendering

### 3.1 Changes in Image Calculation

With pCon.planner 8.6 we have further improved the denoising for photorealistic renderings. It now also works in transparent image areas: For example, your individual background images (*Environment* settings) are taken into account during denoising and therefore appear even more authentic and clear.

The *Advanced Reflections* and *Advanced Ambient Lighting* functions are now active by default during image rendering and are therefore no longer part of the user interface. This allows you to calculate high quality images in a more concise *Image* dialog.



### 3.2 Real-Time Rendering

Performance of the real-time rendering has been improved: the display is notably faster in some scenarios even with older hardware.

## 4 Tools: 2D Projection (pCon.planner PRO)

Start *2D Projection* and use the context menu to decide whether to create your projection in *Wireframe*, *Outline* or *Filled* mode.



Moreover, the arrangement of the projections generated with *2D Projection* complies with the European convention as of pCon.planner 8.6.

## 5 Product Information

The following adjustments have been made to the *Product Information* window:

- When displaying a sub-article, the total price of the complex configuration is also shown.
- Videos and PDFs are displayed in the internal browser of pCon.planner (internal browser based on Microsoft Edge).

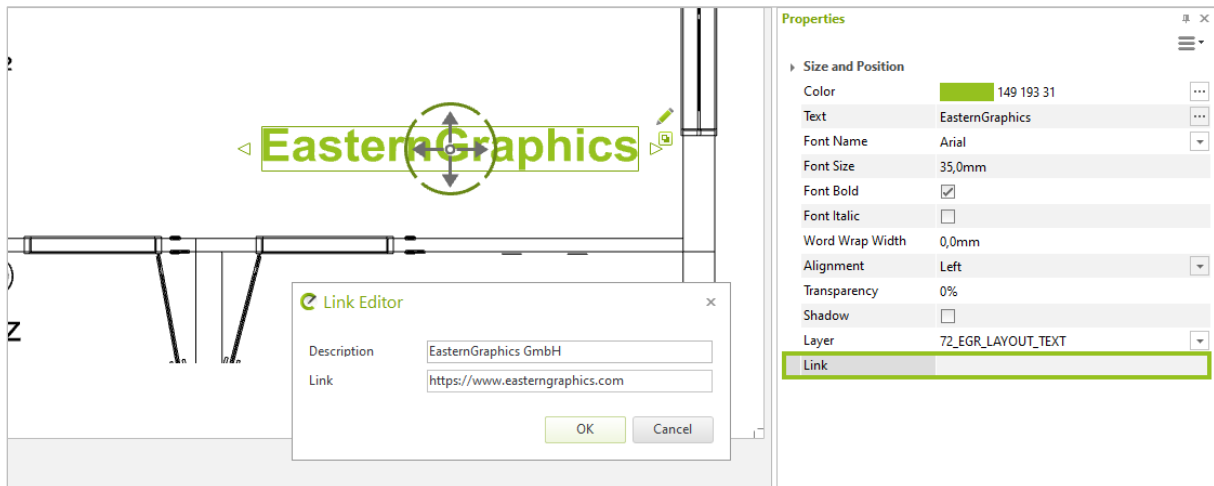
## 6 Integration of 3D Warehouse

Starting with pCon.planner 8.6, you can open Trimble's 3D Warehouse directly in the internal browser again to load 3D objects straight into your planning. You need a Trimble account to download models.

## 7 Layout Area: Integration of Links (pCon.planner PRO)

Images, viewports, drawing elements or texts – use the *Properties Editor* to insert links for all kinds of elements on your *Layout* pages.

Exported PDFs of your pages adopt this link as an interactive element.



## 8 Import and Export Formats

### 8.1 Import Formats

- pCon.planner 8.6 supports Sketchup 2021.1.
- Support for WebP image format.
- Improved PDF import: This includes, for example, extended support for special characters in layer names and improvements in the import of lists.
- 3DS texture files: Improved support for texture names with special characters.

### 8.2 Export Formats

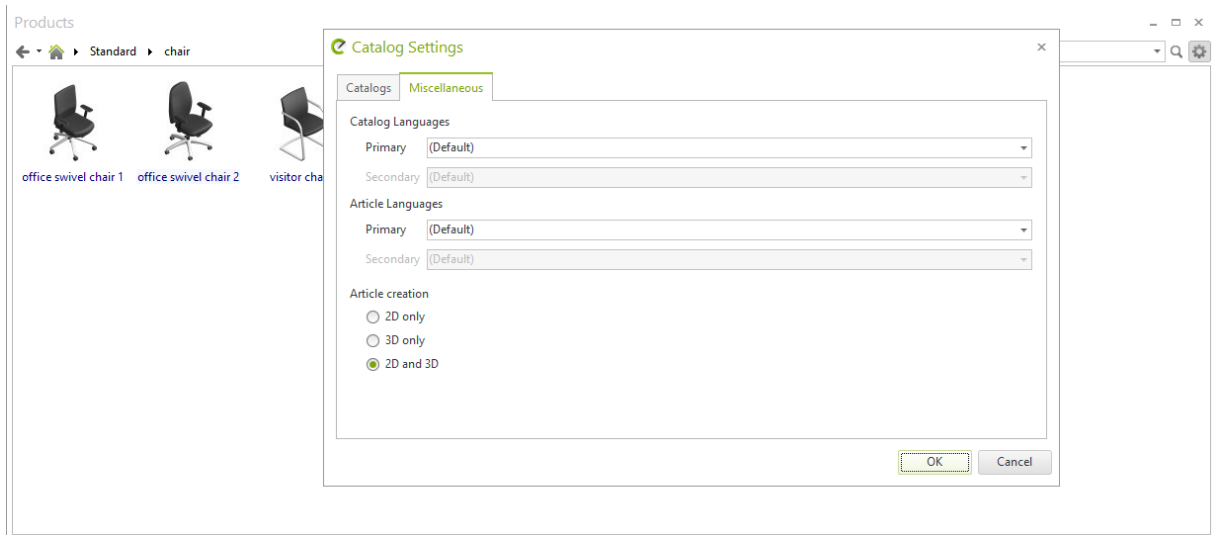
- FBX and DAE export: Enhanced support for element names, tree structures are preserved, export of meshes is improved.
- Removing 3D geometries from drawings for exporting 2D plans to DWG format (option in *DWG Export* dialog) now works even more reliably.
- The Excel export now includes special article text and additional text for your articles, if required.
- Export of vector graphics has become more accurate with pCon.planner 8.6.



## 9 Further Improvements

### 9.1 Catalog Settings (pCon.planner PRO)

The language settings for your product catalogs are now to be found in the *Miscellaneous* tab of the *Catalog Settings*.



### 9.2 Advanced Support for pCon.login (pCon.planner PRO/ME)

pCon.planner 8.6 is compatible with the current version of pCon.login. In addition, we have added the option to take over a license from another session to make it easier for you to switch from office to home office.

In the pCon.planner system information (*Help* tab) there is, among other things, the license type and information about the user account.

### 9.3 Animations: Loop Function

Control the playback of animations in the dynamic *Animation* tab using the new *Loop* function: Here you specify whether your animation should be shown once or in a continuous loop.

## Legal remarks

© EasternGraphics GmbH | Albert-Einstein-Straße 1 | 98693 Ilmenau | GERMANY

This work (whether as text, file, book or in other form) is copyright. All rights are reserved by EasternGraphics GmbH. Translation, reproduction or distribution of the whole or parts thereof is permitted only with the prior agreement in writing of EasternGraphics GmbH.

EasternGraphics GmbH accepts no liability for the completeness, freedom from errors, topicality or continuity of this work or for its suitability to the intended purposes of the user. All liability except in the case of malicious intent, gross negligence or harm to life and limb is excluded.

All names or descriptions contained in this work may be the trademarks of the relevant copyright owner and as such legally protected. The fact that such trademarks appear in this work entitles no-one to assume that they are for the free use of all and sundry.