



pCon.planner 8.9

New Features

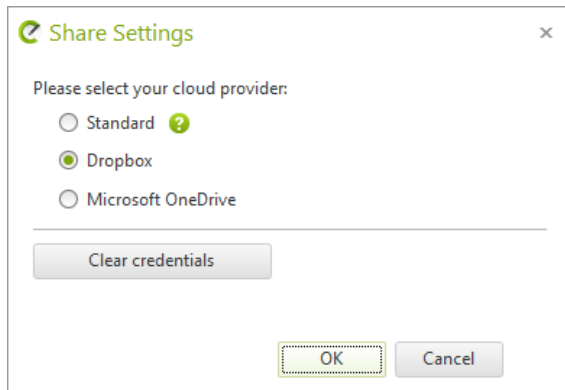
pCon.planner 8.9- New Features

Content

1	New Internal Sharing Service	3
1.1	Support for AR, 3D Models and Panoramic Images.....	3
1.2	Technical Details	3
1.3	Additional Improvements regarding Impress	3
2	High-Resolution Material Images in Material Preview	4
3	Further Improvements in the Properties Editor	5
4	Commercial Articles and OAP	6
4.1	Working with Commercial Articles.....	6
4.2	Profile Manager Redesigned.....	6
4.3	New OAP Interactors.....	6
5	Export for Relux (pCon.planner PRO)	6
6	Rotation of Layout Elements	7
7	Image Rendering	7
8	Breaking Change: No Support for Outdated Data Concept.....	8

1 New Internal Sharing Service

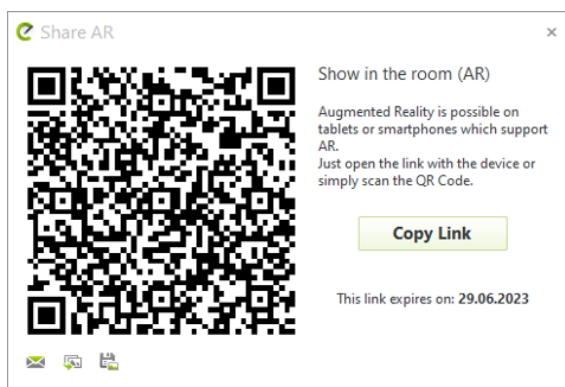
1.1 Support for AR, 3D Models and Panoramic Images



With pCon.planner 8.9, we implemented a new internal service for sharing 3D Models, AR content as well as Panoramic Images. The service provides you with a simple way to share and present your content created in pCon.planner.

The new sharing method works together with Impress. To use the new service, simply open the *Share Settings* dialog (*Presentation* tab, *Share* group) and select *Standard*. After this, select your content and use our sharing functions as usual.

1.2 Technical Details



The new sharing does not need any login or external service to use it.

The created links are temporary. For transparency, the Share dialog as well as the shared link contain the expiration date.

Here are the current restrictions:

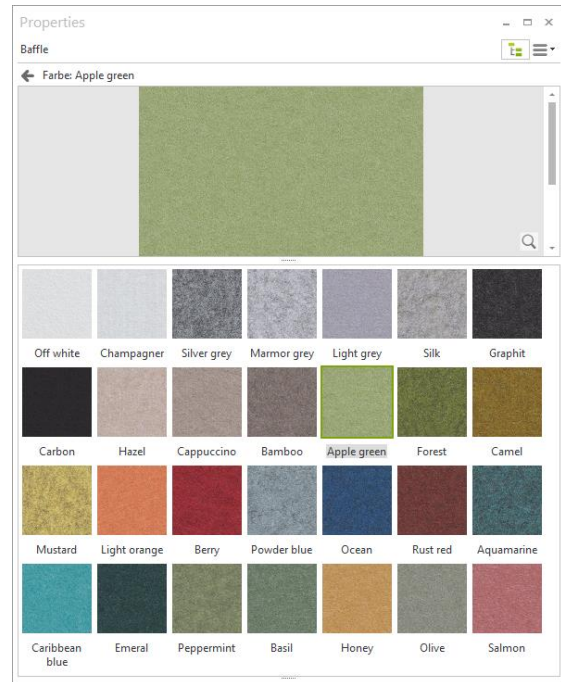
- Maximal size per upload, regardless of type of media uploaded: 1GiB
- Total size of upload per IP in 24h: 10GiB
- Total size for all active uploads from pCon.planner: 1TiB
- Period in which your uploads stay accessible : 30 days

1.3 Additional Improvements regarding Impress

Our Impress service does now display rendered indoor scenarios with better lighting. Ambient occlusion is now enabled for more realistic display of images.

These improvements are restricted to the desktop solution of Impress.

2 High-Resolution Material Images in Material Preview



The new high-resolution material images in the material preview of the *Properties Editor* enhance the unique OFML data processing in pCon applications. Whenever a manufacturer provides high resolution images of the materials used, they are accessible in all of our apps. Use Pan or Zoom to view the material images in detail. It is also possible to view the material in the preview window in its original size. Click the magnifying glass or double click the image to view it at a size of 100%.

The high-resolution images become visible in an own preview area after clicking the standard material preview in the *Properties Editor*.

This preview now always stays opened and can be closed by the *Back* button (or ESC, Enter, Space or CTRL+click).

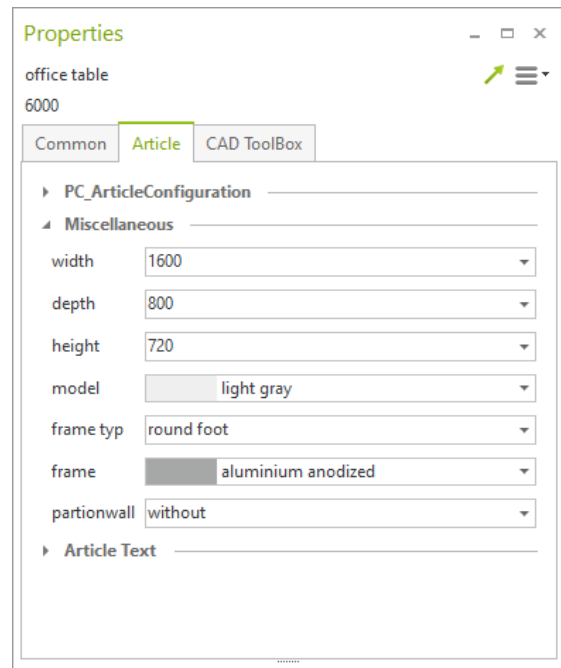
3 Further Improvements in the Properties Editor

We have also reworked the *Properties Editor* to improve its performance during the selection process. This includes keeping the selection when changing focus or during context menu operations.

Furthermore, assigning new properties to your selection does now work more smoothly.

Processing of values in the *Properties Editor* does now support the conversion of expressions like for example "2,5*2/3" -> "1,67".

For more overview in your *Properties Editor*, the status of closed or opened properties groups is now kept by pCon.planner. On restart, all of the properties groups you do not need for your work will be closed and can manually be opened as needed.



4 Commercial Articles and OAP

4.1 Working with Commercial Articles

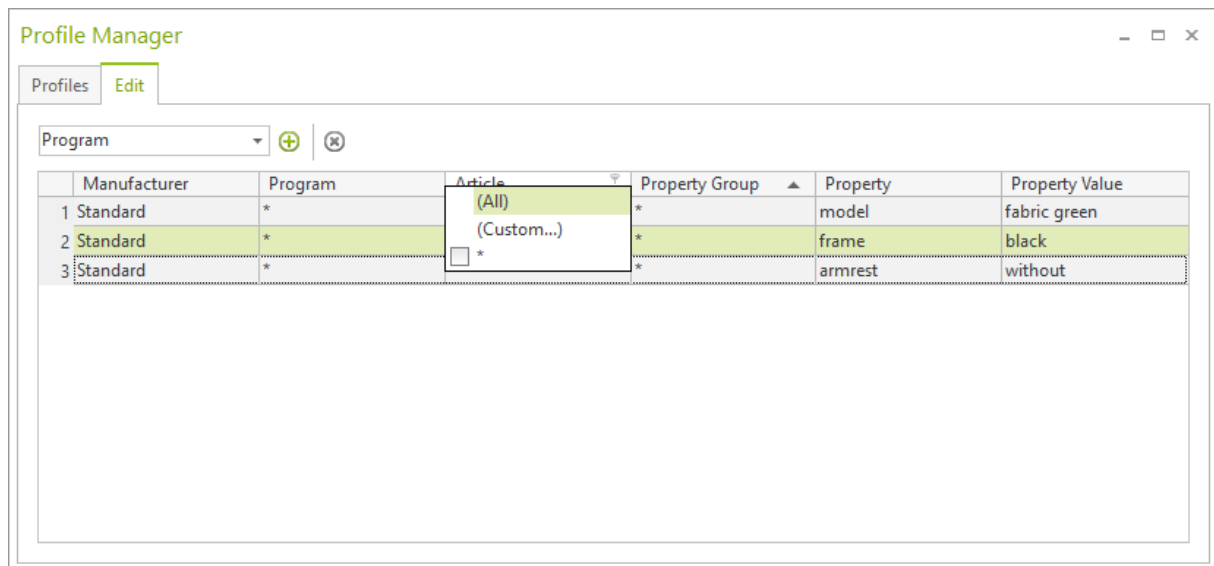
Inserting articles now works more smoothly. In addition, catalog articles stored in PEC format are opened automatically when inserted into your drawing.

4.2 Profile Manager Redesigned

We have reworked the *Edit* tab of the *Profile Manager*. Use the new drop-down menu above the table to determine the level of reference while adding property entries.

The filter for the level of reference of a property within a profile is now integrated into the table header. It is accessed through a click on the right side of the header of the respective column.

Furthermore, manually adjusted widths of the columns are saved and reloaded when starting pCon.planner again.



4.3 New OAP Interactors

The newly added OAP interactors support the following actions: free rotation, lighting as well as electrification.

5 Export for Relux (pCon.planner PRO)

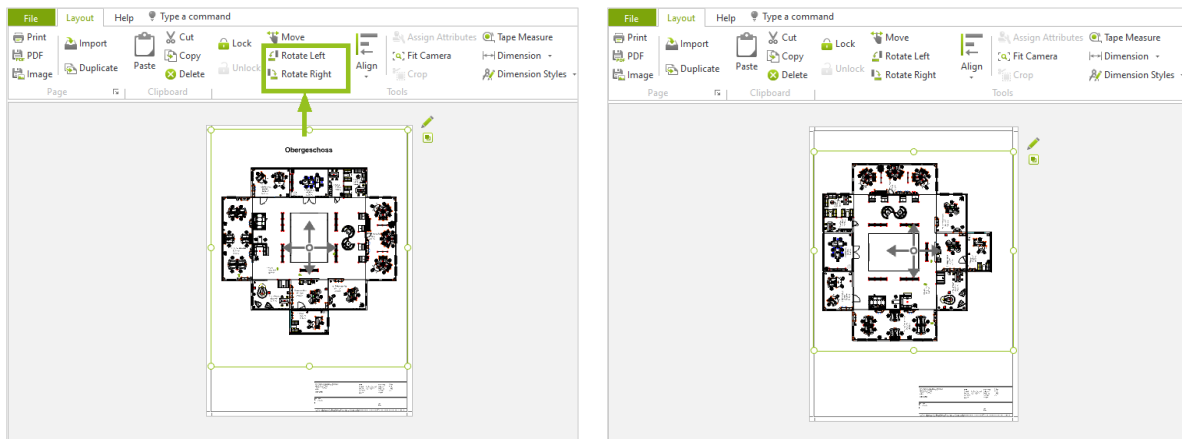
The new RECADZ export connects the pCon.planner with the Relux world and the lighting industry. The export includes an automatic detection for lighting scenarios in individual and multiple rooms. All geometries and basic material information are included in the export.

6 Rotation of Layout Elements

All elements on your *Layout* pages can now be rotated – including viewports and their content. Dimensions attached to elements in viewports are also rotated, even if they were added in the *Layout* area.

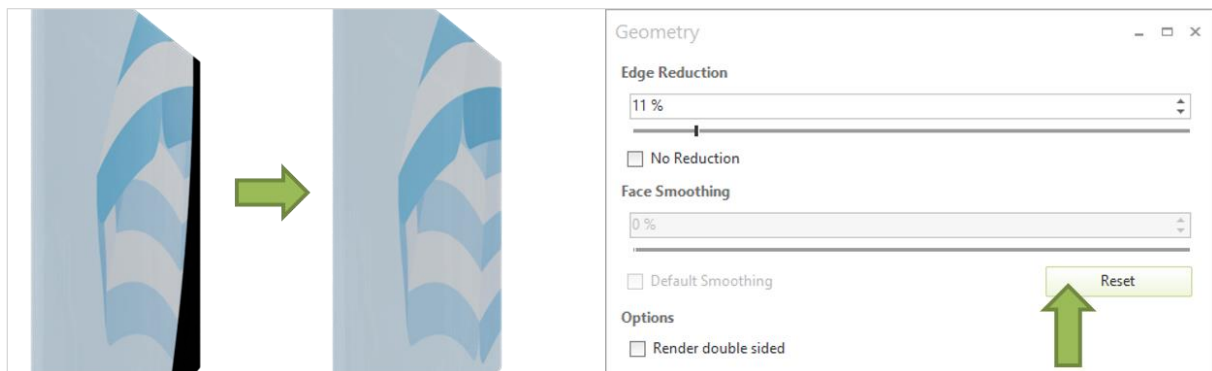
To rotate your elements, select them and click the *Rotate Left/Rotate Right* buttons. Multi selection is possible.

Rotation is possible in 90° steps. With regard to viewports, the rotation feature is restricted to orthogonal views.



7 Image Rendering

The new *Reset* button in the *Geometry* settings dialog serves to fix broken geometries and avoids rendering artifacts to be displayed in images rendered with OSPRay.



In addition, pCon.planner does now create backups for rendered images and panoramas.

8 Breaking Change: No Support for Outdated Data Concept

With pCon.planner 8.9, articles are no longer created as “Configuration”. The obsolete old configuration concept is now fully replaced by our new data concept that is used by all pCon applications. Configuration articles in existing DWG files can, however, still be edited.

Legal remarks

© EasternGraphics GmbH | Albert-Einstein-Straße 1 | 98693 Ilmenau | GERMANY

This work (whether as text, file, book or in other form) is copyright. All rights are reserved by EasternGraphics GmbH. Translation, reproduction or distribution of the whole or parts thereof is permitted only with the prior agreement in writing of EasternGraphics GmbH.

EasternGraphics GmbH accepts no liability for the completeness, freedom from errors, topicality or continuity of this work or for its suitability to the intended purposes of the user. All liability except in the case of malicious intent, gross negligence or harm to life and limb is excluded.

All names or descriptions contained in this work may be the trademarks of the relevant copyright owner and as such legally protected. The fact that such trademarks appear in this work entitles no-one to assume that they are for the free use of all and sundry.